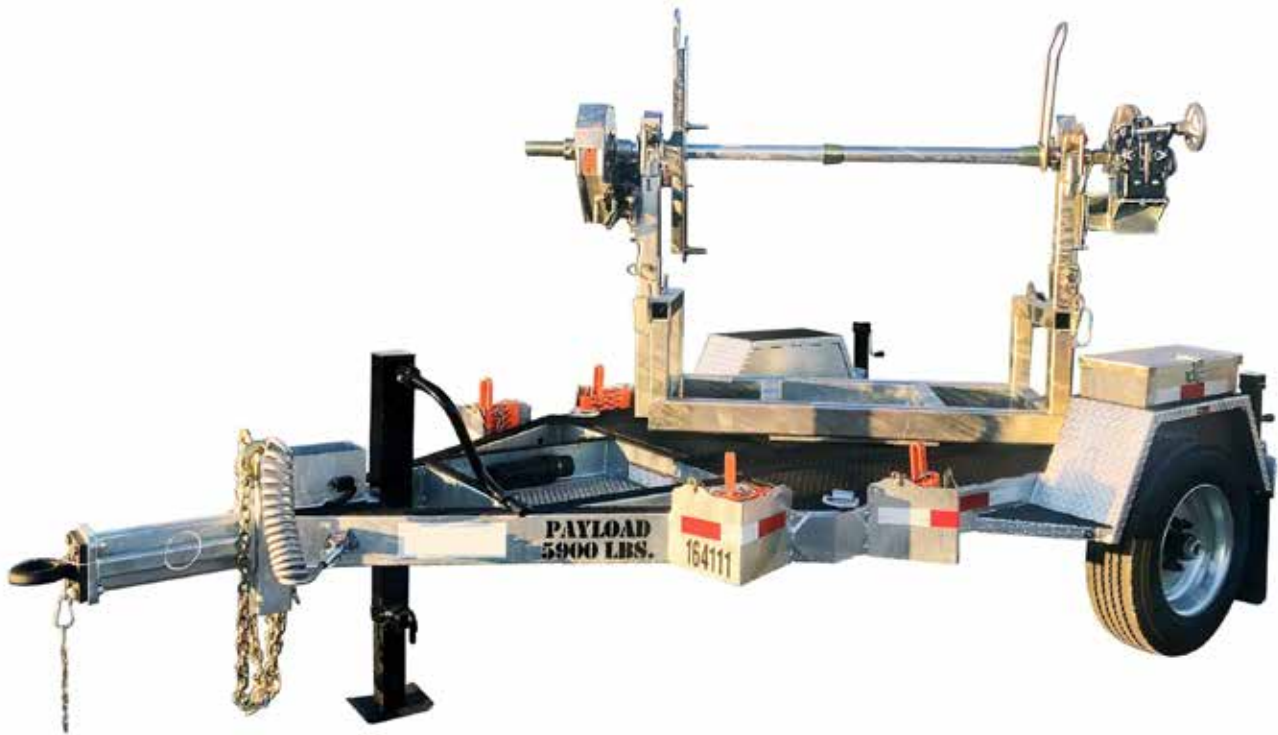


## PL-1RT POWERLOCK™ REEL TRAILER SPECS



### **LOWEST TOTAL COST OF OWNERSHIP (TCO) FROM:**

- **LIFETIME WARRANTY PINLESS POWERLOCK™** Reel Bar Securement
- INDUSTRY LEADING 20" OVERSIZED TURRET BEARING
- 250K Axial, 90K ft/lbs Moment Load Lockable on 6 Degree Intervals
- OPEN TOP, "NON ENCAPSULATED" NYLATRON BEARING SADDLE (low-coefficient of friction). OPEN TOP = LESS FRICTION/LOW MAINTENANCE and EASIER PAY-OUT.
- No Pins or Cotters to Secure Reel Bar (*most critical safety point*)
- Yellow Zinc Electro-Plated and Stainless Precision Machined Components
- **PRACTICAL:** No Expensive, Unnecessary Bronze Components, yet we Don't Cut Corners and Provide Premium, Heavy Duty, Top-Quality Latches, Hardware, Fittings and Components.

**BUILT FOR SAFETY. BUILT FOR SPEED. BUILT TO LAST.**

### CAPACITIES

- PL-1RT6: 9,200 lbs. GVWR @ 15% Tongue Weight
- PL-1RT6-56: 9,200 lbs. GVWR @ 15% Tongue Weight
- PL-1RT8: 11,050 lbs. GVWR @ 15% Tongue Weight
- PL-1RT8-DO: 13,800 lbs. GVWR @ 15% Tongue Weight
- PL-1RT8-DO-EXO: 13,800 lbs. GVWR @ 15% Tongue Weight

### AXLES

- PL-1RT6: 8K lbs. Torsion
- PL-1RT6-56: 8K lbs. Torsion
- PL-1RT8: 10K lbs. Sprung
- PL-1RT8-DO: 12K lbs. Sprung
- PL-1RT8-DO-EXO: 12K lbs. Sprung

### WHEELS

- PL-1RT6: (2) 17.5 x 6.75 HC / 8 on 6.5 BC w/ 0.19 Inset
- PL-1RT6-56: (2) 17.5 x 6.75 HC / 8 on 6.5 BC w/ 0.19 Inset
- PL-1RT8: (2) 17.5 x 6.75 HC / 8 on 6.5 BC w/ 0.19 Inset
- PL-1RT8-DO: (2) 17.5 x 6.75 HC / 8 on 6.5 BC w/ 0.19 Inset
- PL-1RT8-DO-EXO: (2) 17.5 x 6.75 HC / 8 on 6.5 BC w/ 0.19 Inset

### TIRES

- PL-1RT6: (2) ST-215/75R17.5 LR-H Tires
- PL-1RT6-56: (2) ST-215/75R17.5 LR-H Tires
- PL-1RT8: (2) ST-215/75R17.5 LR-H Tires
- PL-1RT8-DO: (2) ST-235/75R17.5 LR-H Tires
- PL-1RT8-DO-EXO: (2) ST-235/75R17.5 LR-H Tires

### BRAKES

- PL-1RT6: 12.25" x 3.38" Electric w/ Safety Breakaway Kit
- PL-1RT6-56: 12.25" x 3.38" Electric w/ Safety Breakaway Kit
- PL-1RT8: 12.25" x 3.38" Electric w/ Safety Breakaway Kit
- PL-1RT8-DO: 12.25" x 5.00" Electric w/ Safety Breakaway Kit
- PL-1RT8-DO-EXO: 12.25" x 5.00" Electric w/ Safety Breakaway Kit

### PAYLOAD: ALL FINAL PAYLOADS BASED ON CHOSEN MODEL AND OPTIONS

#### REEL WEIGHT (PAYLOAD)

- PL-1RT6: 6,200 lbs. Approx. (payload lowers as options chosen)
- PL-1RT6-56: 6,200 lbs. Approx. (payload lowers as options chosen)
- PL-1RT8: 8,000 lbs. Approx. (payload lowers as options chosen)
- PL-1RT8-DO: 8,000 lbs. Approx. (payload lowers as options chosen)

**REEL WEIGHT (PAYLOAD) (cont.)**

- PL-1RT8-DO-EXO: 8,000 lbs. Approx. (payload lowers as options chosen)
- (ADDITIONAL WEIGHT OF OPTIONS REDUCES PAYLOAD)**

**REEL DIAMETER:** Positions from 72", 84" to 96"

**REEL WIDTH:**

- PL-1RT6: 54" Max
- PL-1RT6-56: 56" Max
- PL-1RT8: 54" Max
- PL-1RT8-DO: 60" Max
- PL-1RT8-DO-EXO: 60" Max

**REEL BAR DIA:** 2.5"

**LENGTH:**

- PL-1RT6: 151" Approx.
- PL-1RT6-56: 151" Approx.
- PL-1RT8: 151" Approx.
- PL-1RT8-DO: 164.50" Approx.
- PL-1RT8-DO-EXO: 146" Approx.

**WIDTH:**

- PL-1RT6: 96" Approx.
- PL-1RT6-56: 98" Approx.
- PL-1RT8: 96" Approx.
- PL-1RT8-DO: 101.75" Approx.
- PL-1RT8-DO-EXO: 96" Approx.

**CURB WEIGHT:**

- PL-1RT6: 3,000 lbs. Approx.
- PL-1RT6-56: 3,000 lbs. Approx.
- PL-1RT8: 3,050 lbs. Approx.
- PL-1RT8-DO: 4,100 lbs. Approx.
- PL-1RT8-DO-EXO: 4,150 lbs. Approx.

*Trailer Weight will Vary with Options & Finishes Chosen.*

**STANDARD FEATURES**

- **PINLESS POWERLOCK™ LIFETIME WARRANTY**  
**VIRTUALLY ZERO MAINTENANCE** Yellow Zinc Electroplated

### **STANDARD FEATURES (cont.)**

- **INDUSTRY LEADING 20" OVERSIZED TURRET BEARING w/ 250K Axial, 90K ft/lbs Moment Load Lockable on 6 Deg. Intervals**
- **OPEN TOP, "NON ENCAPSULATED" NYLATRON BEARING SADDLE** (low-coefficient of friction). OPEN TOP = LESS FRICTION/LOW MAINTENANCE and EASIER PAY-OUT. (Haven't Replaced a Saddle in 14 Years)
- Oil Bath Hubs (Greaseable Option All)
- Electric Brakes
- Wheel Chock Holders
- Removable Turrets to Turn Trailer into Flatbed, if Needed.
- Three (3) POINT STEPS AND HANDHOLDS STANDARD**

### **STANDARD TRAILER BODY**

- Heavy Duty 6" X 3" X ¼" Frame
- 6-Position Adjustable Hitch (PL-1RT6, PL-1RT6-56, PL-1RT8, PL-1RT8-DO-EXO)
- 4-Position Adjustable Hitch (PL-1RT8-DO)
- ¾" X 36" GR70 Yellow Zinc Safety Chains with Hooks
- 12,000 lbs. Static Front Jack w/ Spring Return
- Ground Lug: Copper Alloy Star Washer Bolted to Frame (Welded Optional)
- Fenders: ⅛" Fabricated Diamond Plate
- (2) Rear 8,000 lbs. Static Stabilizer Jacks

### **WIRING**

- DOT / ICC-- FMVSS / CMVSS Approved LED ULTRA- HIGH VISIBILITY 180 DEGREE BULLET Marker and Clearance Lights
- LED Sealed Beam Rubber Mounted Stop, Turn, Tail and Marker Lights
- Breakaway Kit with Absorbed Glass Mat (AGM) Battery
- 100% Sealed Heat-Shrunked Wiring Connections w/ Full Loom
- FULLY PROTECTED 7 or 6 Way Female Plug acts as Junction Box Recessed in FRAME RAIL. No Easily Damaged Plastic Junction Boxes

### **PAINT**

- I.M.P.A.C.T Intense Metal pH Acid Surface Prep (Superior to sandblasting that can infuse metal w/ oil)
- Seams Caulked
- Rust Preventative 2-Part Epoxy Primer
- Two-Part Polyurethane Topcoats (2 topcoats)
- Standard Colors: White and CAT Yellow (Custom Available)
- Ten (10) Year Galvanized Structural Warranty (2-Year Painted)

## OPTIONS

- 13 HP HONDA Engine Hydraulic Power Pack Comes STANDARD w/ ENGINE COVER, 15 Gallon Reservoir, Replaceable Oil Filter, Pressure Gauge and Solar Fade Resistant Plastic Control Placard. (Electric Start Optional)
- 3,300 ft/lbs Torque Hydraulic Take-up Retriever. (Motor Spooled w/ Reel Brake ILO Cross-Over Relief Valve for Smooth Instant Reel Stoppage)
- 2-7/16" Universal Adapter for Capstan and Power Reel Attachments
- Hydraulic Hose Rotary Swivel Union (*manages & eliminates loose hydraulic hoses*)
- 7 Inch General Purpose Capstan
- Collapsible Power Reel
- Auxiliary Hydraulic Quick-Connect Ports
- 16" Bronze Alloy Ventilated Reel Brake
- 9" Stainless Steel Overspin Brake
- 16" Long 6-Bolt Hitch Extension (w/ 52" Safety Chains and Breakaway Cable Extension)
- 3" Lunette Eye
- Rotating Arbor Ground
- All Stainless Steel Fasteners (1/2" and under)
- Anti-Skid/Anti-Glare Sand Paint on all Walking Surfaces
- Various Trailer Light Plugs (Customer Choice)
- Aluminum or Steel Toolbox
- Air Brakes w/ ABS
- Wiring Connections Soldered and Sealed w/ Heat Shrink Tubing
- Plug-and-Play Sealco Wiring Harness
- Wheel Chocks: Rubber or All Weather Galvanized Grip Strut
- Spare Tire and Mount
- Solar Charged Breakaway Kit
- Strobe Warning Lights
- Hydraulic Front Jack
- Hydraulic Rear and Intermediate Outriggers
- Telescoping Rear and Intermediate Outriggers
- Truck-Lite Lighting
- Lug Nut Indicators

## OPTIONAL PREMIUM ROLLER PACKAGE

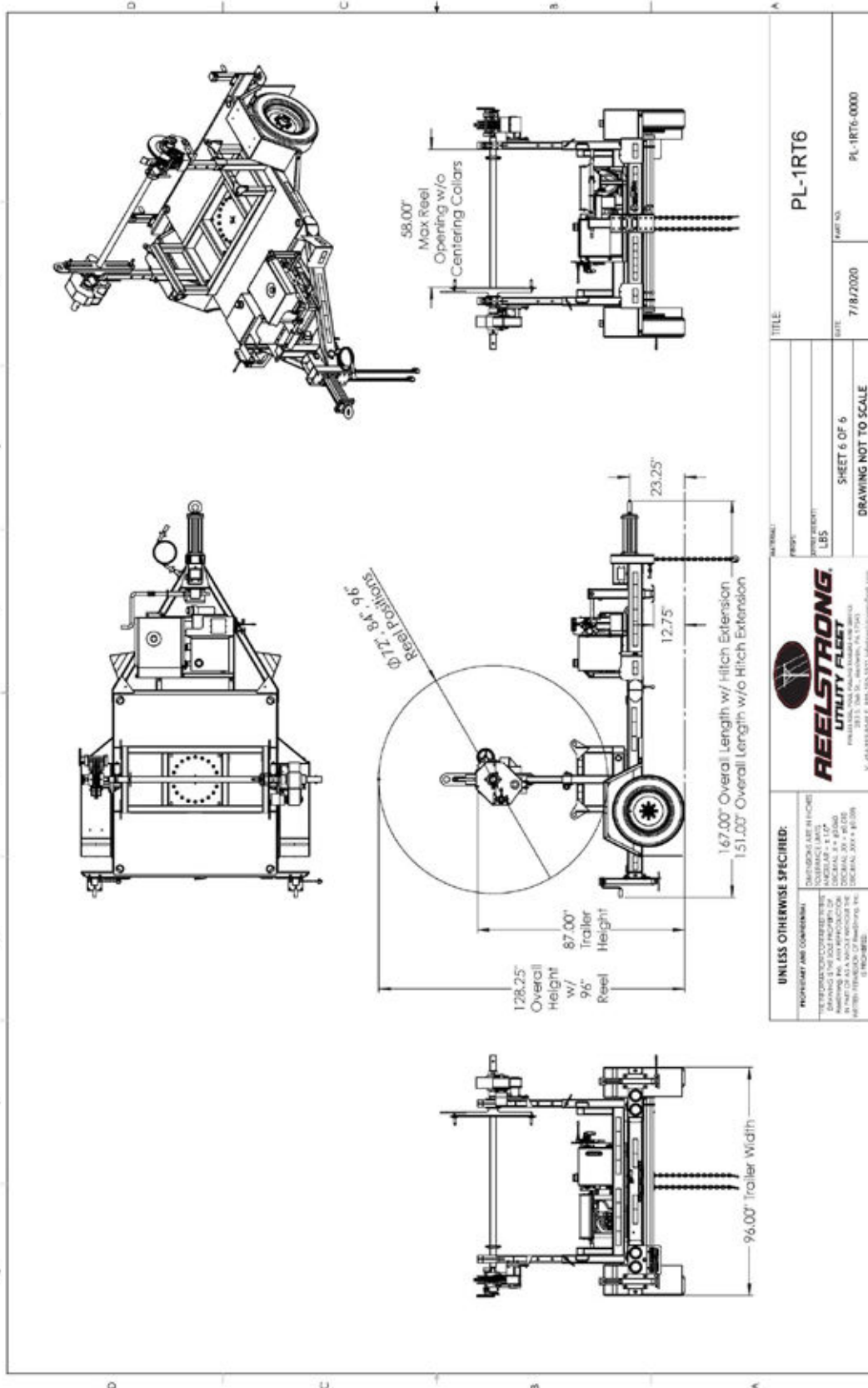
- OVD Fairlead Rollers (One "1" Per Turret)
- URD Fairlead Rollers (Two "2" Per Turret)
- OVD/URD Cable Gathering Windows
- URD Arching/Traversing Fairlead

## OPTIONAL ECONOMY ROLLER PACKAGE

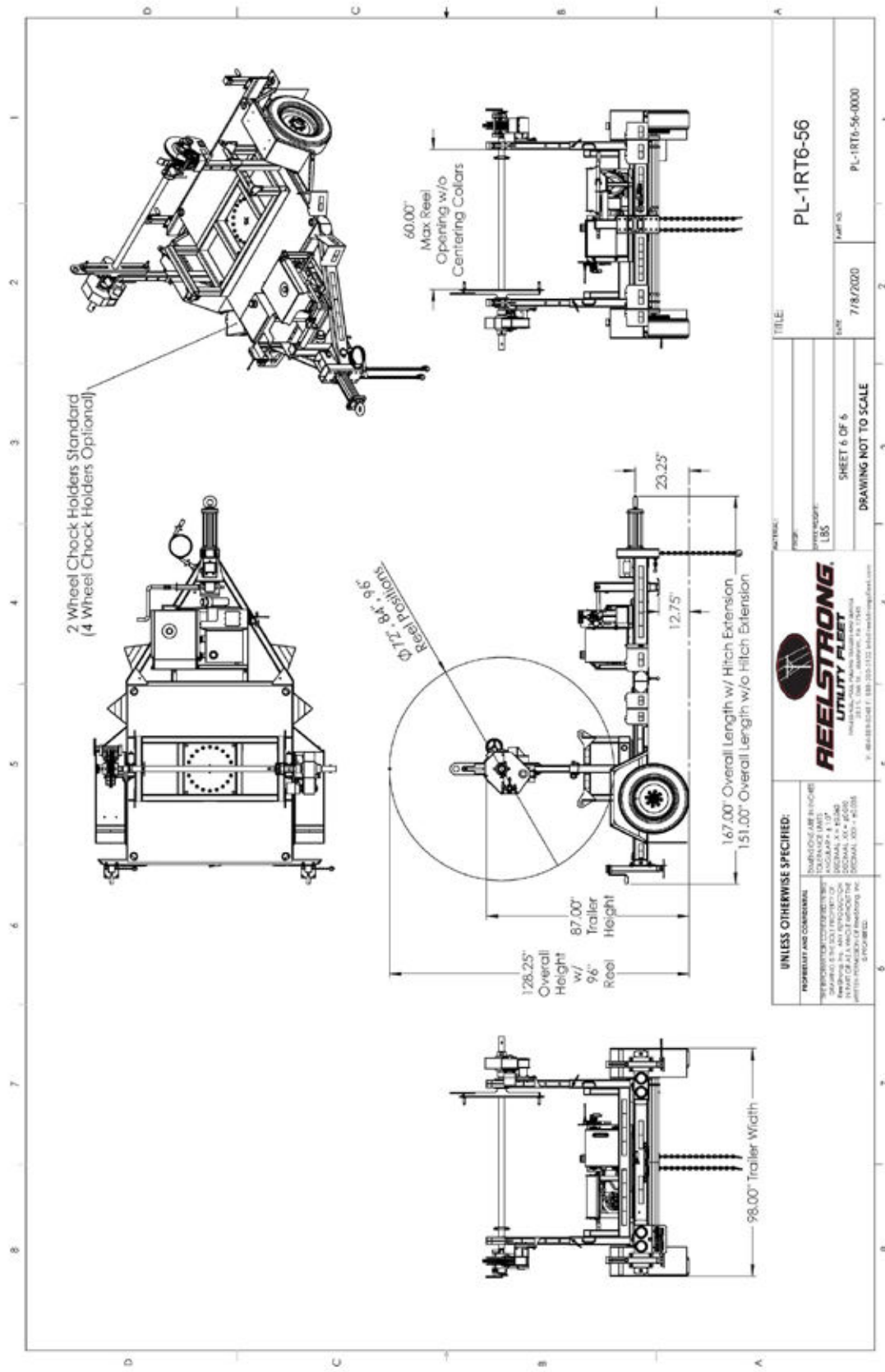
- OVD Fairlead Rollers (One "1" Per Turret)
- URD Fairlead Rollers (Two "2" Per Turret)

**OPTIONAL ECONOMY ROLLER PACKAGE (cont.)**

- OVD/URD Cable Gathering Windows
- URD Cable Gathering Window



<b>UNLESS OTHERWISE SPECIFIED:</b> DIMENSIONS ARE IN INCHES TOLERANCES ARE: FRACTIONS DECIMALS ANGLES & LIPS DRAWING AND MANUFACTURING 24 100 1/2 1/2 FINISHES AND SURFACES 24 100 1/2 1/2 HOLE LOCATIONS 24 100 1/2 1/2 HOLE DIAMETERS 24 100 1/2 1/2 UNLESS OTHERWISE SPECIFIED:		TITLE: <b>PL-1RT6</b> DATE: 7/18/2000 SHEET 6 OF 6 DRAWING NOT TO SCALE	
REELSTRONG UTILITY FLIGHT 30331 7th St. - Suite 100 - Dallas, TX 75243 V. (416) 581-5048 F. (800) 253-5122 info@reelstrong.com		PART NO. PL-1RT6-0000	



2 Wheel Chock Holders Standard  
(4 Wheel Chock Holders Optional)

Ø 72.84" 96" Reel Position

126.25" Overall Height w/ 96" Reel Height

87.00" Trailer Height

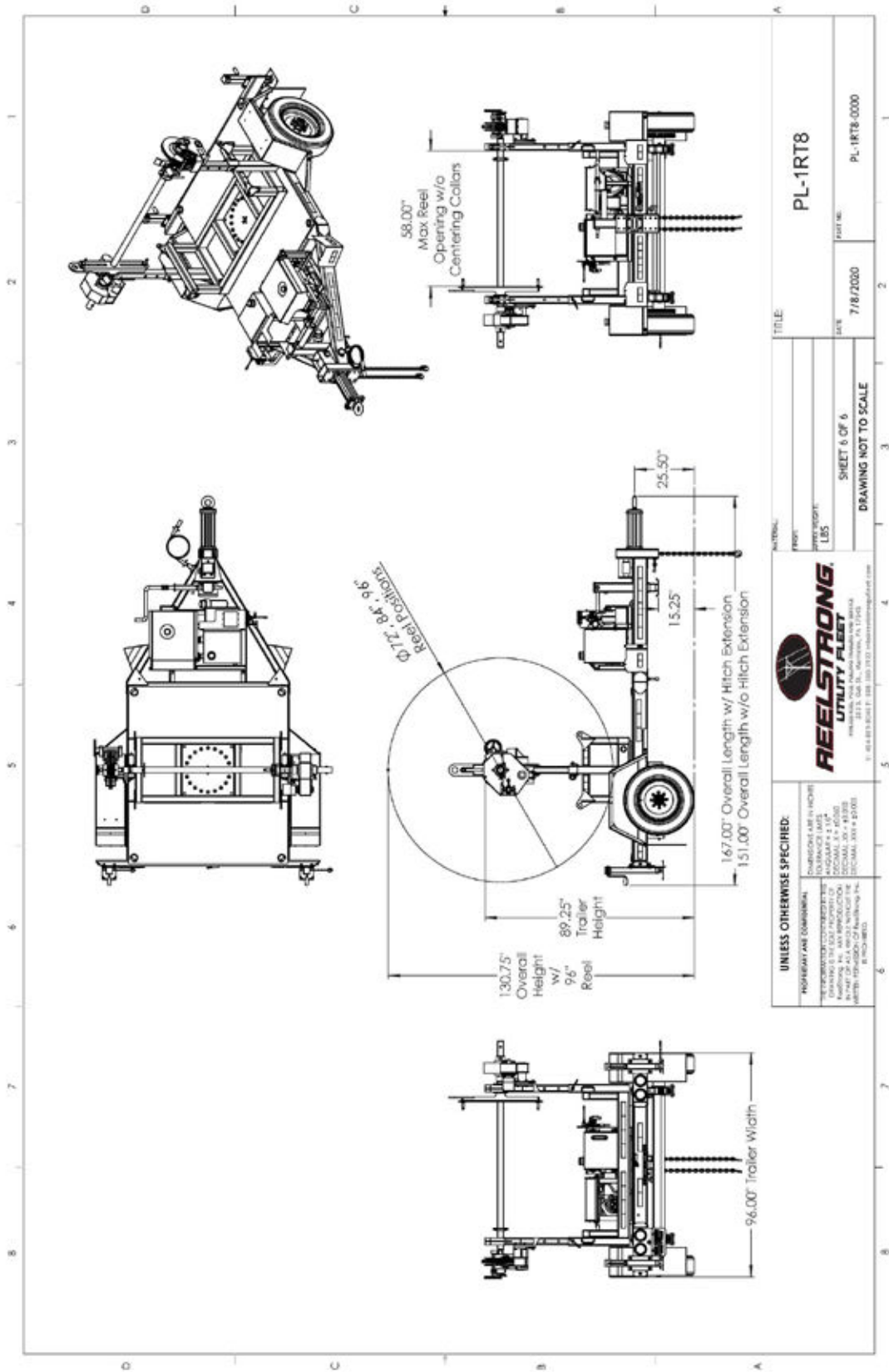
23.25"

12.75"  
167.00" Overall Length w/ Hitch Extension  
151.00" Overall Length w/o Hitch Extension

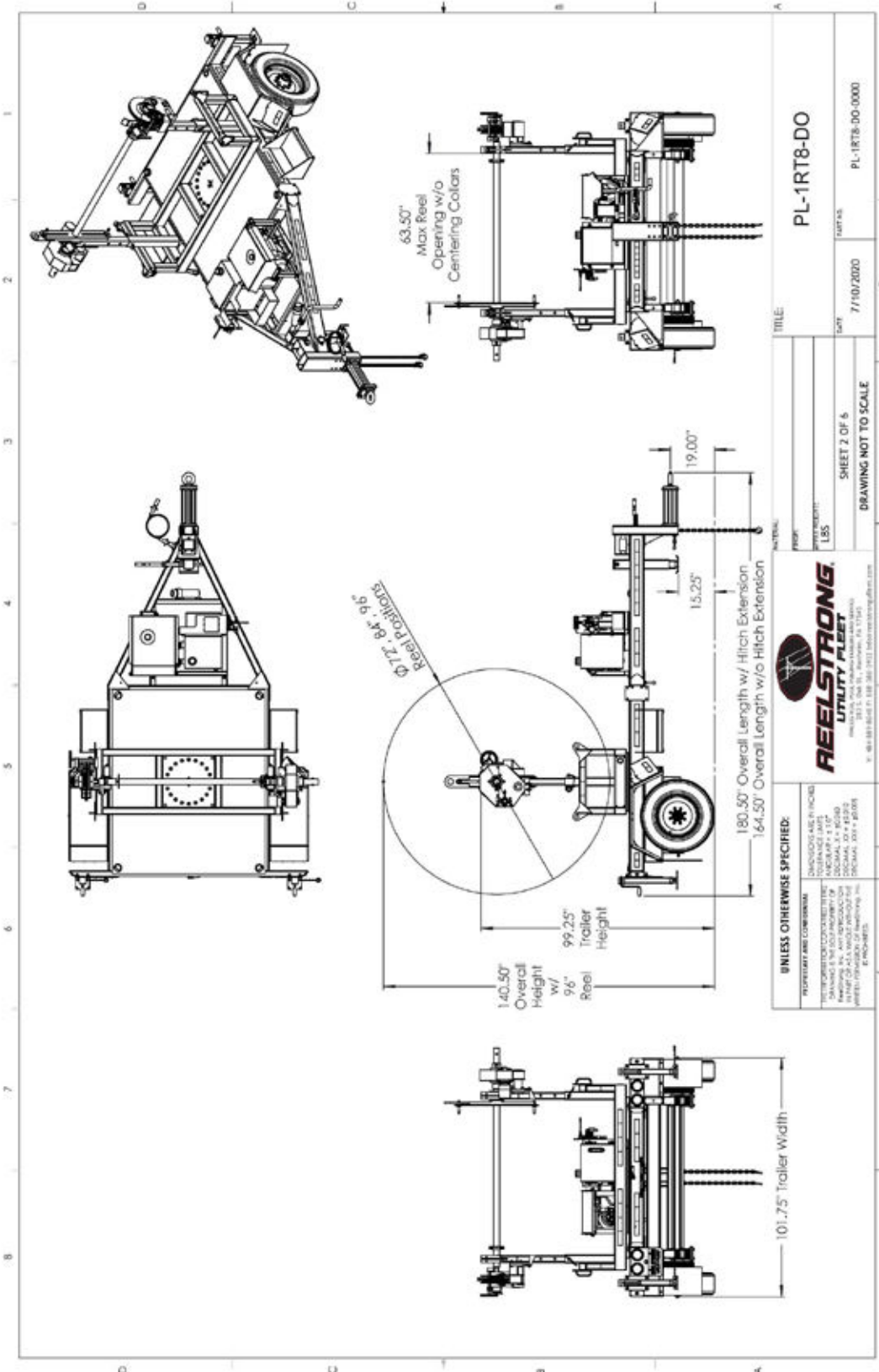
98.00" Trailer Width

<b>UNLESS OTHERWISE SPECIFIED:</b>		 REELSTRONG UTILITY FLEET 217 E. 2nd St., Ardmore, PA 17718 P: 484-888-5424 F: 484-225-1122 Email: marketing@reel.com	
PROPERTIES AND CONDITIONS TO WHICH THESE SPECIFICATIONS APPLY:	TOLERANCES ARE FRACTIONS UNLESS OTHERWISE SPECIFIED. DIMENSIONS FOR MATERIALS TO BE SUPPLIED BY THE CONTRACTOR SHALL BE AS SHOWN UNLESS OTHERWISE SPECIFIED. MATERIALS SHALL BE AS SHOWN UNLESS OTHERWISE SPECIFIED.		
TITLE	PL-1RT6-56	DATE	7/18/2020
SCALE	SHEET 6 OF 6		
DRAWING NOT TO SCALE			
PROJECT			
NO.			
REV.			
		PL-1RT6-56-0000	





<p><b>UNLESS OTHERWISE SPECIFIED:</b></p> <p>ALL DIMENSIONS ARE IN INCHES TOLERANCES ARE: DIMENSIONS TO SURFACES ±0.005 DIMENSIONS TO HOLES ±0.010 DIMENSIONS TO HITCH ±0.010 DIMENSIONS TO OTHER DIMENSIONS ±0.010</p>		<p><b>REELSTRONG</b> UTILITY FLATBED</p> <p>11115 Old St. Houston, TX 77036 Tel: 281-483-8000 Fax: 281-483-8001 www.reelstrong.com</p>		<p>DATE: 7/18/2020</p> <p>PROJECT: LBS</p> <p>SCALE: SHEET 6 OF 6</p> <p>DRAWING NOT TO SCALE</p>	
<p>TITLE: PL-1RT8</p>		<p>DATE: 7/18/2020</p>		<p>PL-1RT8-0000</p>	



UNLESS OTHERWISE SPECIFIED: DIMENSIONS ARE IN INCHES TOLERANCES UNLESS OTHERWISE SPECIFIED: FRACTIONS DECIMALS MILLIMETERS 1/16" 0.0625" 1.5875" 1/8" 0.125" 3.175" 1/4" 0.25" 6.35" 3/8" 0.375" 9.525" 1/2" 0.5" 12.7" 3/4" 0.75" 19.05" 1" 1.0" 25.4" E-PRO-0025		<p><b>REELSTRONG</b> UTILITY TRAILER</p> <p>REELSTRONG TRAILER MANUFACTURING, INC. 1000 W. 10TH STREET MCKEAN, PA 15236 TEL: 724-838-8800 FAX: 724-838-8801 WWW.REELSTRONG.COM</p>	
<p>PROF: _____</p> <p>DESIGNED BY: LBS</p>		<p>TITLE: <b>PL-1RT8-DO</b></p>	
<p>SHEET 2 OF 5</p> <p>DRAWING NOT TO SCALE</p>		<p>DATE: 7/10/2020</p> <p>PL-1RT8-DO-0000</p>	

