



PADS | CRIBBING | MATS

PRODUCT CATALOG

dicausa.com >>

EXPERIENCE THE DICA[®] DIFFERENCE

You want to be safe on every job. But with so many variables, it's hard to determine that you're buying the right pads and cribbing.

To help solve this problem, we created our EveryDay Fitting Process to ensure you receive the best solution to help your team stay productive, efficient, and safe.

Your confidence, loyalty, and friendship are extremely important to us. We welcome you to try any of our engineered solutions risk-free. It's just our way of making sure you and your crews have peace of mind on every setup.

Kris Koberg, CEO



PARTNERSHIP FOCUSED

Partners care for your needs beyond the sale. Their process is intentional, precise, and personal. At DICA, we take the partner approach because you deserve it.

ENGINEERED PRODUCTS

Our industry-leading outrigger pads, crane pads, and plastic cribbing are ASME compliant and trusted by operators in 40+ countries worldwide.



ICA[®]
EST. 1988

0.3422
THE U.S.A.

FITTING PROCESS

Thousands of owners, managers, and operators have trusted our fitting process to find the best pads, cribbing, and ground protection mats for their crews.

MONEY BACK GUARANTEE

If you're not convinced the products you purchase from us are the safest solution for your people and equipment, we'll give you 100% of your money back.

Table of Contents

SafetyTech Outrigger Pads

Overview	3
Medium Duty	4
Heavy Duty	5
Super Duty	6
Special Duty	7

ProStack Cribbing Blocks

Overview	9
Models	10

FiberMax Crane Pads

Overview	11
Mega Duty	13
Hardware	14

FiberMax Outrigger Pads

Overview/Models	15
-----------------------	----

TrainSmart Pole Barriers

Overview/Models	16
-----------------------	----

Ground Protection Mats

AlturnaMATS	17
VersaMATS	18



**MADE IN
THE U.S.A.**

THE MOST TRUSTED OUTRIGGER PADS IN THE WORLD

SafetyTech® Outrigger Pads are engineered from top to bottom and built using our proprietary engineered thermoplastic formula for improved performance that meets your everyday needs.

Owners and operators love DICA SafetyTech Pads for their toughness, ease of use and durability. These qualities help teams work safely, efficiently and cost-effectively in some of the toughest environments around the world.

- ▶ **Engineered Thermoplastic Material**
- ▶ **Guaranteed Unbreakable**
- ▶ **Ergonomic TuffGrip Handles**
- ▶ **Patented Designs**
- ▶ **Available in 3D Plan**

ENGINEERED MATERIAL

DICA's engineered thermoplastic material eliminates issues found with wood and steel pads and ensures a strong and stable foundation.

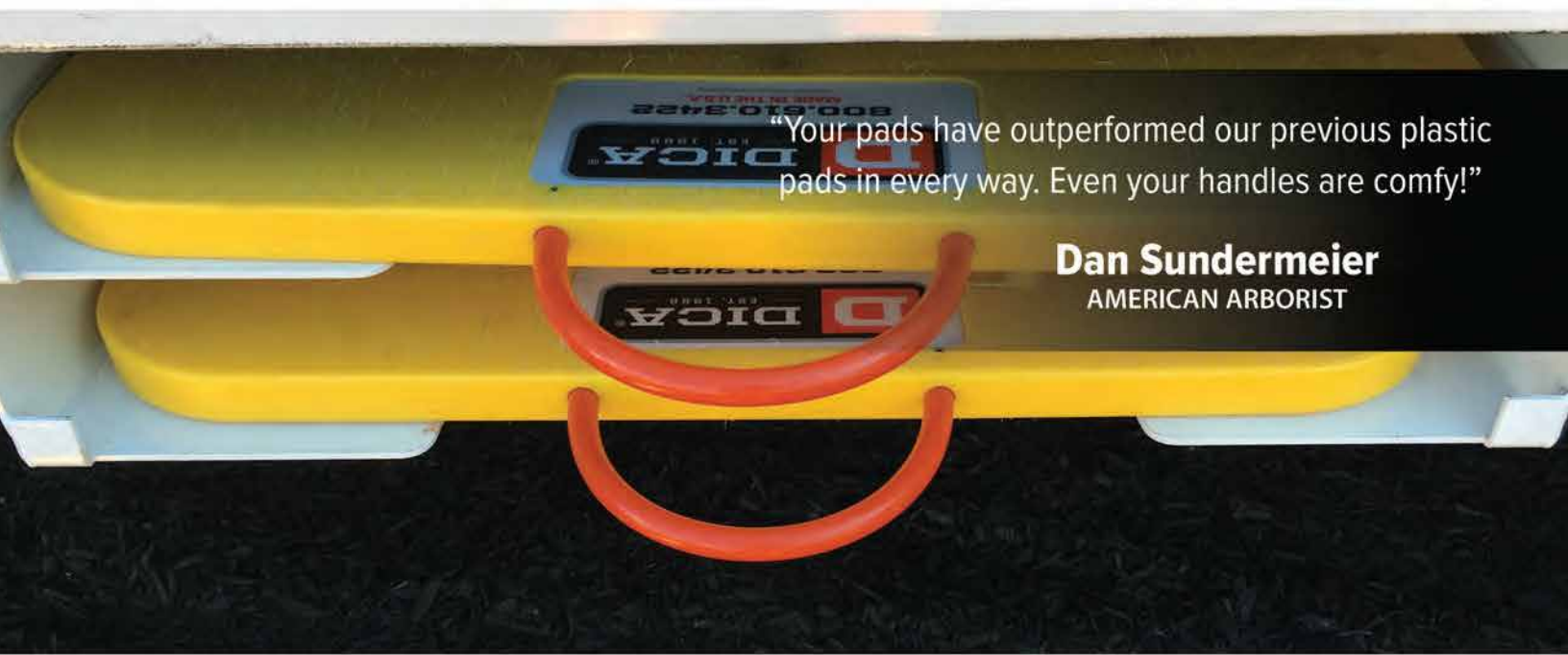
ERGONOMIC HANDLES

TuffGrip Handles are guaranteed unbreakable, comfortable, waterproof, and resistant to use and abuse on the job site.

PATENTED TECHNOLOGY

DICA Pads have been awarded six patents, which cover our innovative handle and pad designs that make our pads safer and easier to use.





“Your pads have outperformed our previous plastic pads in every way. Even your handles are comfy!”

Dan Sundermeier
AMERICAN ARBORIST

PRODUCT DETAILS

- Engineered Thermoplastic Material
- TuffGrip® Handles
- Waterproof and Chemical Resistant
- Industrial Grade Safety Texturing
- Radius Edges and Corners
- Non-Conductive
- 1 Person Carry
- Guaranteed Unbreakable

BEST FOR

- Equipment with Stabilizers
- Bucket Trucks
- Digger Derricks
- Landing Gear Equipment

PRODUCT	W x L x H (in)	THICKNESS (in)	APPROX AREA (sq ft)	WEIGHT (lbs)	CRUSH RATING* (psi)	WORKING LOAD LIMIT* (lbs)
1" Pads						
A D1818	18 x 18 x 1	1 inch	2	11	200	45,000
B D1818-Y	18 x 18 x 1	1 inch	2	11	200	45,000
C D1818-O	18 x 18 x 1	1 inch	2	11	200	45,000
D D2224	22 x 24 x 1	1 inch	3.5	17	200	55,000
E D2424	24 x 24 x 1	1 inch	4	19	200	60,000
F D2424-Y	24 x 24 x 1	1 inch	4	19	200	60,000
G D2424-O	24 x 24 x 1	1 inch	4	19	200	60,000
H D3030	30 x 30 x 1	1 inch	6	30	200	75,000
1.5" Pads						
I D1818-1.5	18 x 18 x 1.5	1.5 inch	2	15	200	55,000
J D2424-1.5	24 x 24 x 1.5	1.5 inch	4	29	200	65,000
K DR30-1.5 (Round)	30 x 1.5	1.5 inch	5	35	200	80,000
L DR36-1.5 (Round)	36 x 1.5	1.5 inch	7	52	200	85,000



Crush Rating – The maximum allowable pressure. **Working Load Limit** – The maximum allowable load based on the application.





“Every crane in my fleet is equipped with a set of DICA Pads, and always will.”

Ross Kovach
ROSSCO CRANE & RIGGING

PRODUCT DETAILS

- Engineered Thermoplastic Material
- TuffGrip® Handles
- Waterproof and Chemical Resistant
- Industrial Grade Safety Texturing
- Radius Edges and Corners
- Non-Conductive
- 1-2 Person Carry or Roll
- Guaranteed Unbreakable

BEST FOR

- Mobile Cranes
- Concrete Pumpers
- Aerial Lifts
- Digger Derricks

PRODUCT	W x L x H (in)	THICKNESS (in)	APPROX AREA (sq ft)	WEIGHT (lbs)	CRUSH RATING* (psi)	WORKING LOAD LIMIT* (lbs)
2" Pads						
A D1515-2	15 x 15 x 2	2 inch	1.5	15	500	65,000
B D1818-2	18 x 18 x 2	2 inch	2	20	500	70,000
C D2424-2	24 x 24 x 2	2 inch	4	38	500	80,000
D D2424-2-Y	24 x 24 x 2	2 inch	4	38	500	80,000
E D2424-2-O	24 x 24 x 2	2 inch	4	38	500	80,000
F D3030-2	30 x 30 x 2	2 inch	6	60	500	95,000
G D3636-2	36 x 36 x 2	2 inch	9	86	500	110,000
H D4242-2	42 x 42 x 2	2 inch	12	120	500	125,000
I D4848-2	48 x 48 x 2	2 inch	16	150	500	140,000
J DR30-2 (Round)	30 x 2	2 inch	5	45	500	85,000
K DR36-2 (Round)	36 x 2	2 inch	7	68	500	100,000
L DR42-2 (Round)	42 x 2	2 inch	9.5	92	500	115,000
M DR48-2 (Round)	48 x 2	2 inch	12.5	120	500	130,000
N DR60-2 (Round)	60 x 2	2 inch	19.5	190	500	160,000



Crush Rating – The maximum allowable pressure. **Working Load Limit** – The maximum allowable load based on the application.





“Your outrigger pads have been a solid investment safety wise by allowing our personnel to handle outrigger pads with minimal physical strain.”

Rick L. Barr

TRI-STATE GENERATION & TRANSMISSION

PRODUCT DETAILS

- Engineered Thermoplastic Material
- TuffGrip® Handles
- Waterproof and Chemical Resistant
- Industrial Grade Safety Texturing
- Radius Edges and Corners
- Non-Conductive
- Lifting Points for Rigging
- Guaranteed Unbreakable

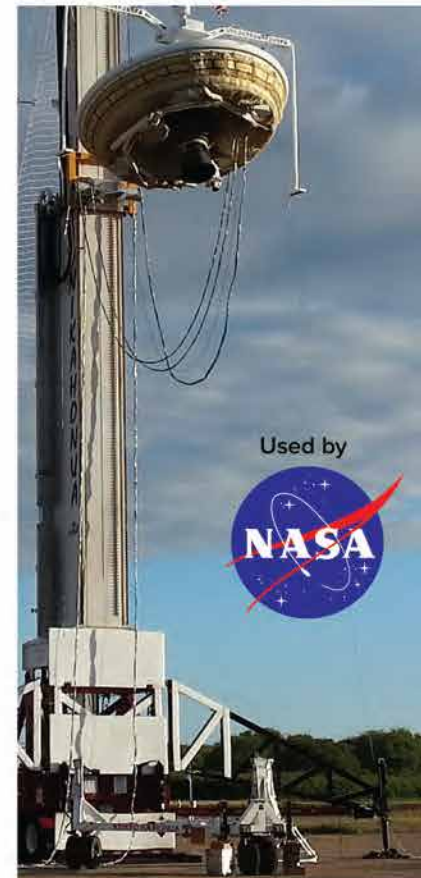
BEST FOR

- Mobile Cranes
- Concrete Pumpers
- Aerial Lifts
- Rock Crushers

PRODUCT	W x L x H (in)	THICKNESS (in)	APPROX AREA (sq ft)	WEIGHT (lbs)	CRUSH RATING* (psi)	WORKING LOAD LIMIT* (lbs)
3" Pads (Available in Black)						
A D1818-3	18 x 18 x 3	3 inch	2	32	600	95,000
B D2424-3	24 x 24 x 3	3 inch	4	60	600	112,000
C DR36-3 (Round)	36 x 3	3 inch	7	102	600	130,000
D DR42-3 (Round)	42 x 3	3 inch	9.5	138	600	150,000
E DR48-3 (Round)	48 x 3	3 inch	12.5	180	600	170,000
F DR60-3 (Round)	60 x 3	3 inch	19.5	285	600	210,000
4" Pads (Available in Black)						
G DR48-4 (Round)	48 x 4	4 inch	12.5	245	750	200,000
H DR60-4 (Round)	60 x 4	4 inch	19.5	380	750	240,000



Crush Rating – The maximum allowable pressure. **Working Load Limit** – The maximum allowable load based on the application.





Cavity Pad Plus

Cavity Pad Plus Pads have an inverted beveled edge guard that reduces the potential of an outrigger foot escape. Pads have excellent rigidity and “nest” together for a total stored height of 3”.

BEST FOR:

Aerial Lifts, Digger Derricks, Tree Care Equipment

MODEL	W x L x H	WEIGHT
DCP1818-S4	18”x18”x1”	13 lbs.
DCP2424-S4	24”x24”x1”	23 lbs.



Cavity Pads

Cavity pads are designed to safely contain a stabilizer foot. The completely solid pad design eliminates the need for metal fasteners, providing an unbreakable foot guard.

BEST FOR:

Aerial Lifts, Digger Derricks, Tree Care Equipment

MODEL	W x L x H	WEIGHT
DC2020-1.5-A	20”x20”x1.5”	14 lbs.
DC2020-1.5L-O	20”x20”x1.5”	14 lbs.
DC2424-1.5	24”x24”x1.5”	20 lbs.



Cleated Pads

Positioned downward, the serrated cleat grips for improved traction. When positioned upward, it provides an unbreakable stabilizer foot guard.

BEST FOR:

Aerial Lifts, Digger Derricks, Tree Care Equipment

Cleat Kit Installation Options:

- 1 Cleats and hardware shipped to you for self installation
- 2 Installed by our manufacturing team on pads of your choice



Sliding Shoe Pads

Pads easily fit onto a stabilizer foot and lock in place. Equipment can be re-positioned or secured for travel without having to stow outrigger pads.

BEST FOR:

Compact Aerial Equipment, Portable Track Lifts, Mini Cranes

MODEL	W x L x H	WEIGHT
DS-1	12"x24"x1"	16 lbs.
DS-2	11"x24"x1.5"	19 lbs.
DS-3	9.25"x22"x1"	12 lbs.
DS-4	11"x24"x1"	15 lbs.



Pole Puller Pads

Steel hardware locks a pole pulling base plate into position and a rigid base pad provides unbreakable support for pole pulling operations. Custom design options available.

BEST FOR:

Pole Pulling Equipment

MODEL	W x L x H	WEIGHT
DP3224	32"x24"x1"	21 lbs.
DP3224-1.5	32"x24"x1.5"	30 lbs.



Recessed Radius

Recessed radius is designed to safely contain an outrigger foot, while the thermoplastic material provides exceptional support.

BEST FOR:

Concrete Pumps

MODEL	W x L x H	WEIGHT
D2424-2-CR	24"x24"x2"	36 lbs.
D3030-2-CR	30"x30"x2"	58 lbs.
D3636-2-CR	36"x36"x2"	84 lbs.

ENGINEERED CRIBBING BLOCKS THAT SAFELY INTERLOCK

ProStack Interlocking Plastic Cribbing Blocks provide height for operators in environments where there are significant changes in grade. They are designed to be used under equipment with outrigger loads that do not exceed 110,000 pounds.

The ProStack System consists of a base outrigger pad, interlocking plastic cribbing blocks and a high friction top grip pad. Plastic Cribbing wedges are available to help level the base pad on uneven surfaces.

- ▶ **Interlocking Pyramid Design**
- ▶ **Easy Setup and Breakdown**
- ▶ **Predictable Performance**
- ▶ **Impervious to Moisture**
- ▶ **Ergonomic Handles**

INTERLOCKING

The SafetyTech base pad and plastic cribbing blocks have a pyramid-shaped surface that interlock. The more load you exert on the set-up the tighter it locks together.

ENGINEERED

ProStack consists of a engineered base outrigger pad, interlocking plastic cribbing blocks, a high friction top grip pad and leveling wedges.

4 SIMPLE STEPS To Make Your Setup Safe



STEP 1

The base SafetyTech Outrigger Pad is positioned first. It's pyramid-shaped surface faces upward to receive the interlocking pyramids on the cribbing blocks.



STEP 2

The first layer of (2) ProStack cribbing blocks is added, with their pyramid shape surface, they fit tightly into the base pad and each other.



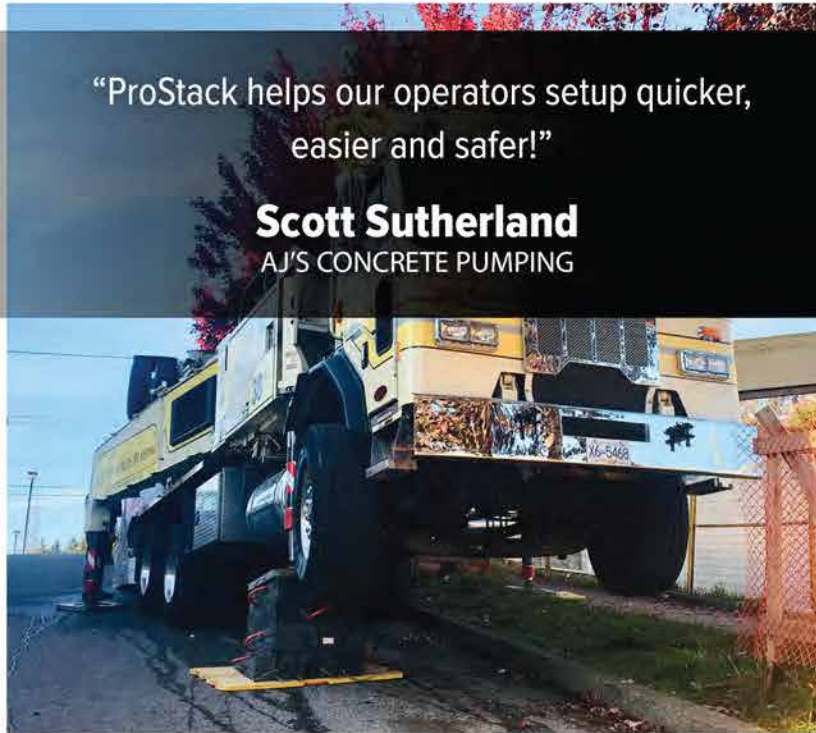
STEP 3

The second layer of (2) ProStack cribbing blocks is added, which also fit tightly into the initial layer of blocks and each other.



STEP 4

Lastly, a ProStack Grip Pad is placed on top of the stack to protect the pyramid surface on the blocks and provide a high friction surface for the outrigger foot.



“ProStack helps our operators setup quicker, easier and safer!”

Scott Sutherland
AJ'S CONCRETE PUMPING

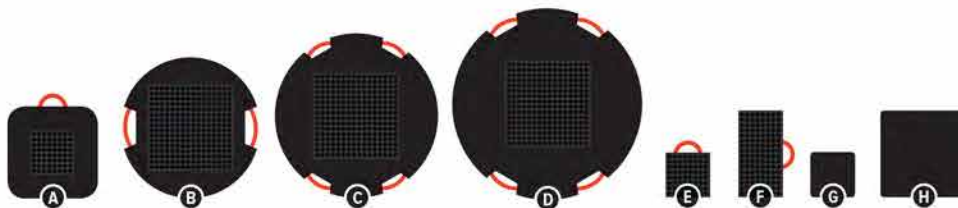
STRONG

ProStack is designed for concrete pumpers, boom trucks, digger derricks, and aerial bucket trucks, or any equipment with outrigger loads up to 110,000 pounds.

HEIGHT

ProStack provides the height you need to operate, without having to compromise the safety you need to eliminate your worries.

MODEL	INTERLOCKING PYRAMIDS	DIMENSIONS (in)	APPROX AREA (sq ft)	WEIGHT (lbs)	CRUSH RATING (psi)	WORKING LOAD LIMIT (lbs)
SafetyTech Outrigger Pads						
A PSC-D2424-2	Yes	24 X 24 X 2	4	38	500	80,000
B PSC-DR36-2	Yes	36 X 2	7	68	500	100,000
C PSC-DR42-2	Yes	42 X 2	9.5	92	500	115,000
D PSC-DR48-2	Yes	48 X 2	12.5	120	500	130,000
Cribbing Blocks						
E PSC-1212-6	Yes	12 X 12 X 6	1	26	500	55,000
F PSC-2412-6	Yes	24 X 12 X 6	2	55	500	110,000
Neoprene Grip Pads						
G NP1212.75	N/A	12 X 12 X 0.75	1	4	N/A	N/A
H NP2424.75	N/A	24 X 24 X 0.75	4	16	N/A	N/A



THE LIGHTEST CRANE PADS IN THE WORLD

DICA's engineered, fully molded, one-piece **FiberMax® Crane Pads** optimize load distribution in four directions to predictably and effectively distribute highly concentrated outrigger loads. This design allows for float placement anywhere on the pad.

Weighing 60% less than typical steel pads, steel plate and wood pads, FiberMax Pads consistently reduce transportation and operating costs for you.

- **Typically 60% Lighter than Steel Pads, Steel Plate and Wood Pads**
- **Superior Load Distribution**
- **Faster Setup and Teardown Times**
- **Model Specific Owner's Manual**
- **Available in 3D Lift Plan**

EXCEPTIONAL STRENGTH

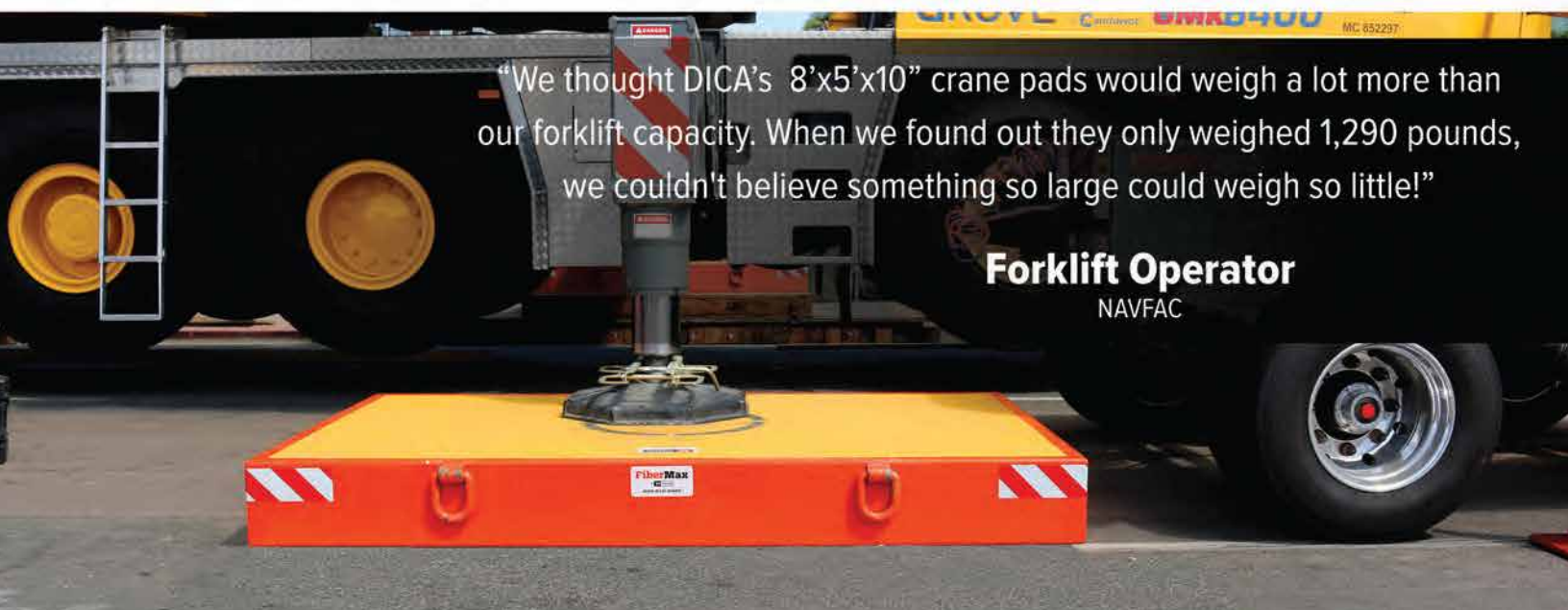
Engineered to provide maximum strength, rigidity and lightweight performance for cranes with lifting capacities up to 500 tons.

LIGHTWEIGHT

FiberMax Pads allow you to setup and tear down up to 75% faster and free up room for other equipment on your trailer.

LOWER COSTS

Lighter weight allows for the elimination of a dedicated truck and trailer, overweight permits and the challenges that go with them.



"We thought DICA's 8'x5'x10" crane pads would weigh a lot more than our forklift capacity. When we found out they only weighed 1,290 pounds, we couldn't believe something so large could weigh so little!"

Forklift Operator
NAVFAC



“With their ease of handling, lighter weight, professional look and longevity, our FiberMax Pads will pay for themselves in just a few years.”

Joe Estep
CONNELLY CRANE RENTAL

PRODUCT STANDARDS

- Bi-Directional Internal Shear Web Design
- Impervious to Chemicals and Water
- Hi-Viz Standard Frames
- Foot Placement Target & Non-Slip Wear Surface

CUSTOMER BENEFITS

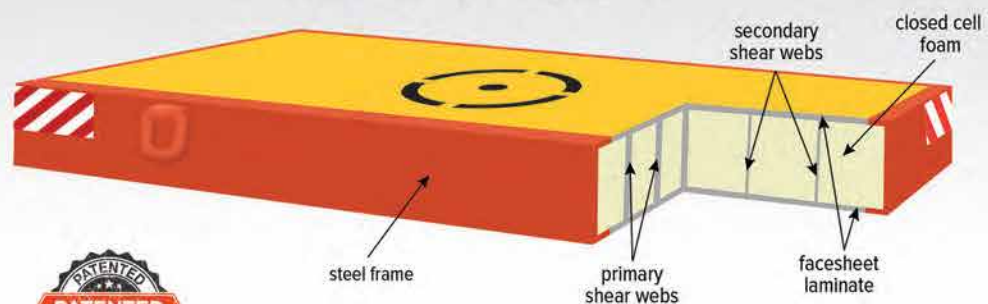
- The Only Crane Pads that Make You Money
- Typically 60% Lighter than Common Solutions
- Up to 75% Faster Setup and Tear Down
- Unmatched Longevity

Engineered Design

FiberMax’s fully molded, bi-directional, shear web design, directs outrigger loads in all four directions. This proven design makes FiberMax Crane Pads a truly directionally orthotropic solution and superior in lowering overall ground bearing pressures.

Inside a FiberMax Crane Pad

Bi-Directional Shear Web Design



“The new pads have freed up weight and space on my rigging trailer for other things I need. I am completely sold on these crane pads.”

Greg Ormund
SOUTHERN CRANE



MODELS

PRODUCT	W x L x H	THICKNESS (in)	AREA (sq ft)	WEIGHT (lbs)	CRUSH RATING (psi)	MAX RATED CAPACITY* (lbs)
6" Pads						
FM5x4x6 (STOCK ITEM)	5' x 4' x 6"	6 inch	20	500	500	175,000
FM6x4x6 (STOCK ITEM)	6' x 4' x 6"	6 inch	24	570	500	175,000
FM6x5x6	6' x 5' x 6"	6 inch	30	680	500	175,000
6.75" HD Pads (Provides a higher crush rating and max rated capacity without having to go to a 10" pad)						
FM6x5x6-HD	6' x 5' x 6.75"	6.75 inch	30	880	600	250,000
FM7x5x6-HD (STOCK ITEM)	7' x 5' x 6.75"	6.75 inch	35	1,010	600	250,000
FM8x5x6-HD	8' x 5' x 6.75"	6.75 inch	40	1,150	600	250,000
10" Pads						
FM5x5x10	5' x 5' x 10"	10 inch	25	860	1,000	325,000
FM8x5x10 (STOCK ITEM)	8' x 5' x 10"	10 inch	40	1,290	1,000	325,000
FM8x6x10	8' x 5' x 10"	10 inch	48	1,510	1,000	325,000
FM9x6x10	9' x 6' x 10"	10 inch	54	1,670	1,000	325,000
12" Pads						
FM9x6x12	9' x 6' x 12"	12 inch	54	1,850	1,000	400,000
FM10.5x7.5x12	10.5' x 7.5' x 12"	12 inch	78.75	2,590	1,000	400,000

Crush Rating – The maximum allowable pressure. **Maximum Rated Capacity** – The maximum force that can be applied to the pad for warranty purposes.

“FiberMax Crane Pads save us setup and teardown time, which saves us money job after job.”

Chris Campbell
BREWER CRANE & RIGGING



LIFTING HARDWARE & ACCESSORIES

PRODUCT	DESCRIPTION	LIFTING CAPACITY
A FO-D	D-Ring Lifting Hardware	4 PADS
B FO-LL	Mega Duty Lifting Lugs	4 PADS
C FO-CLP	Crosby Lifting Points	4 PADS
D FO-MDLP	Stack & Pin Lifting & Storing Hardware	4 PADS
E FO-ACC	Tubular Angled Corner Cribbing	N/A





“These pads made my job a lot easier and safer.”

Anthony Boyd
US ARMY CORPS OF ENGINEERS

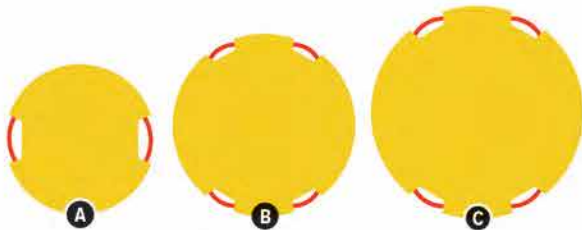
PRODUCT DETAILS

- Extreme Rigidity
- Engineered Strength
- Best Rigidity & Strength to Weight Ratio
- Durability and Longevity
- Hi-Viz TuffGrip® Handles
- Waterproof and Chemical Resistant
- Industrial Grade Safety Texturing
- Recessed Handles for Easy Rolling

BEST FOR

- Mobile Cranes
- Hi-Lift Aerials
- Digger Derricks
- Concrete Pump Trucks

MODEL	W X L X H (in)	THICKNESS (in)	APPROX AREA (sq ft)	WEIGHT (lbs)	CRUSH RATING* (psi)	WORKING LOAD LIMIT* (lbs)
A FTR36-1	36 X 1	1 inch	7	75	600	130,000
B FTR42-1	42 X 1	1 inch	9.6	100	600	150,000
C FTR48-1	48 X 1	1 inch	12.5	130	600	170,000



Crush Rating – The maximum allowable pressure. **Working Load Limit** – The maximum allowable load based on the application.





100%
Maintenance
Free!

MAINTENANCE FREE

100% maintenance free pole barrier that will not fade, splinter or degrade in any way.

EASY TO USE

Pole barriers and bases easily separate allowing for hassle free setup and storage.

SUPER STRONG

TrainSmart Pole Barriers won't break, crack, chip or splinter.

LIGHTWEIGHT

Constructed of a lightweight high strength engineered thermoplastic material that is significantly lighter than wood.

MEETS NCCCO STANDARDS

Meets all NCCCO Standards and provides a maintenance free, easy to use and durable pole barrier solution.

SPECIFICATIONS

MODEL	TP-1100	POLE (Height)	36" from top of pole to ground (when inserted into the base)
BASE (W x L x H)	12" X 12" X 1 1/2"	RED SECTION (Height)	12"
BASE HOLE (Diameter)	1 15/16"	STRING	#18 Nylon String





FEATURES

- Easily supports 120-ton vehicles
- Rugged 1/2" thick polyethylene
- Diamond plate design for great traction
- Easily link to build roads or working platforms
- Available smooth on one or two sides, ideal for removing dirt or gravel

BENEFITS

- Save money! No more replacing plywood or trips to buy it
- Virtually eliminate getting stuck ever again
- Leave turf smooth, even in soft conditions
- No more handling splintered or water-logged plywood
- Backed by a limited lifetime warranty

PRODUCT	W X L (ft)	WEIGHT (lbs)	COLOR
AM48	4' X 8'	86	Black/Clear
AM38	3' X 8'	64.5	Black/Clear
AM36	3' X 6'	51	Black/Clear
AM28	2' X 8'	43	Black/Clear
AM26	2' X 6'	32.25	Black/Clear
AM24	2' X 4'	21.5	Black/Clear





FEATURES

- Easily supports 120-ton vehicles
- Rugged 1/2" thick polyethylene
- Slip-resistant tread design
- Easily link to build roads or working platforms
- Available smooth on one or two sides, ideal for removing dirt or gravel

BENEFITS

- Save money! No more replacing plywood or trips to buy it
- Virtually eliminate turf ruts
- Leave turf smooth, even in soft conditions
- No more handling splintered or water-logged plywood
- Backed by a limited lifetime warranty

PRODUCT	W X L (ft)	WEIGHT (lbs)	COLOR
VM48	4' X 8'	86	Black/Clear
VM38	3' X 8'	64.5	Black/Clear
VM28	2' X 8'	43	Black/Clear



JDC



JDCequipment.com

800.336.4369